

www.komasco.com

KOMASCO

KOREA MARINE SUPPLY CO.,LTD



1187-5, Choryang-3dong, Dong-Ku, Busan, Korea, 601-838
Tel: 82-51-466-5443 Fax: 82-51-466-5440
E-mail: komasco@komasco.com www.komasco.com



KOVID 051241-4144 No.1-1308



Your One Stop Supplier In Korea



Faith Begets Faith

Greeting

“we can do it”

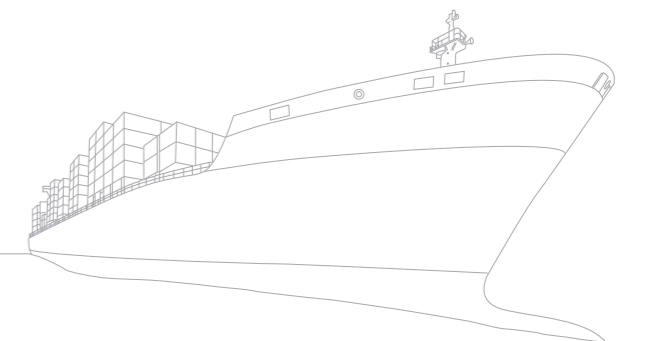
With our firm belief that started off with only "We can do it!" we continuously tried to become a part of the new wind that is occurring in business, especially in Marine Business where most change is taken place.

We are very aware that our effort allows the customers to get familiar with us, Trust helps to raise our firm value, and that us being where the customers want us to be is a very simple fact. Because we know advices and counsels given by customers are a big engine to grow our firm, we will listen to your sincere opinions all the time.

To create a firm culture with technology, creativeness, and no regret for customers, all workers in KOMASCO will do our best to satisfy customers with endless updated technology and new advanced management technique. Also, we will do our best for customers' service by not missing a single harbor in Korea.

Sincerely Yours

PRESIDENT JONG SOO JEONG

Contents	05 _ Greeting
	06 _ General Outline
	07 _ History
	08 _ Organization
	09 _ Quality & Environment
	10 _ Why KOMASCO
	12 _ Business Outline
	20 _ Customer List
	21 _ Port Index
	22 _ EMS Ship Supply

General Outline

Location

- 1187-5, Choryang-3dong, Dong-Ku, Busan, Korea, 601-838.
- Tel: 82-51-466-5443
- Fax: 82-51-466-5440
- E-mail: komasco@komasco.com
- www.komasco.com

Capital-Stock

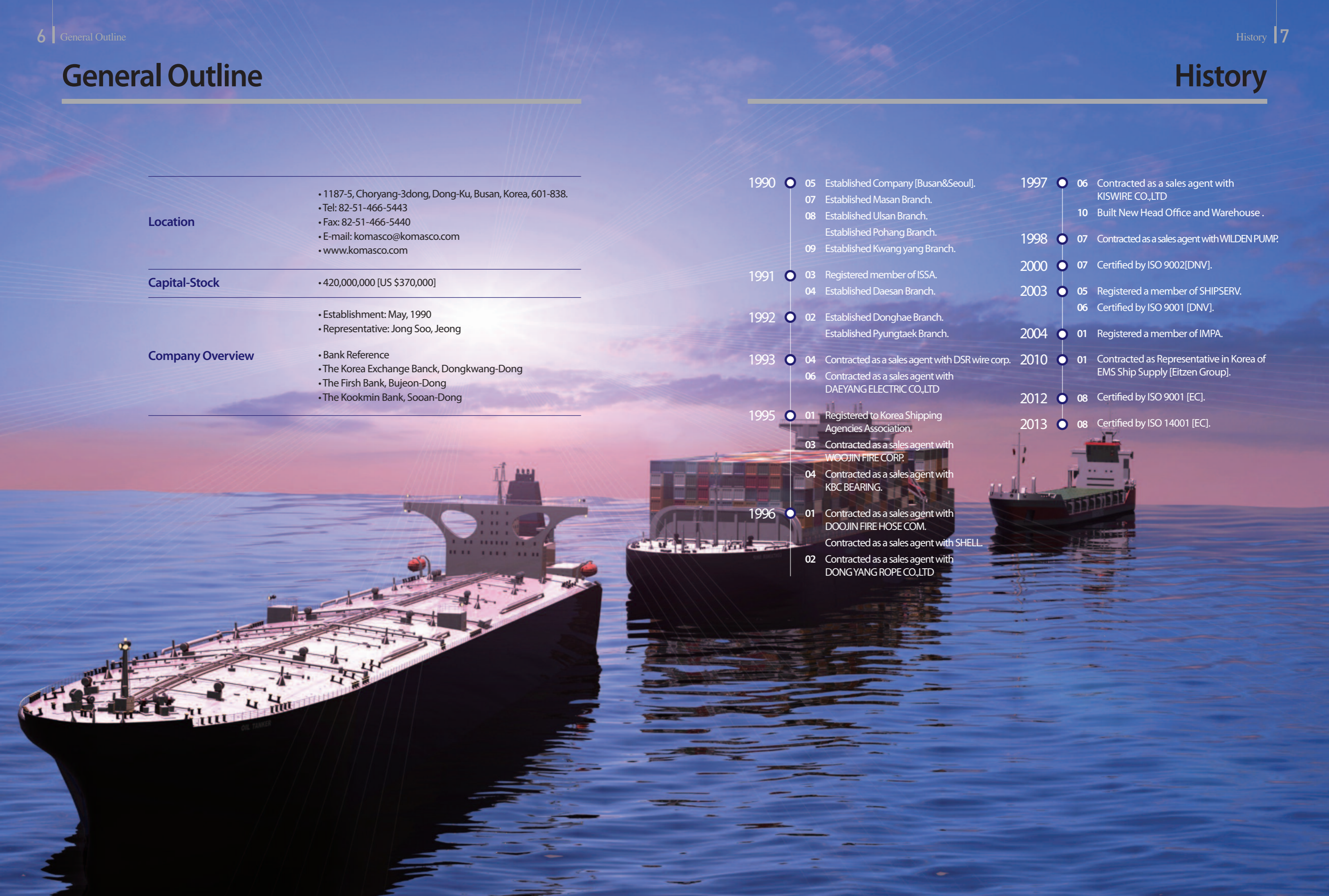
- 420,000,000 [US \$370,000]

Company Overview

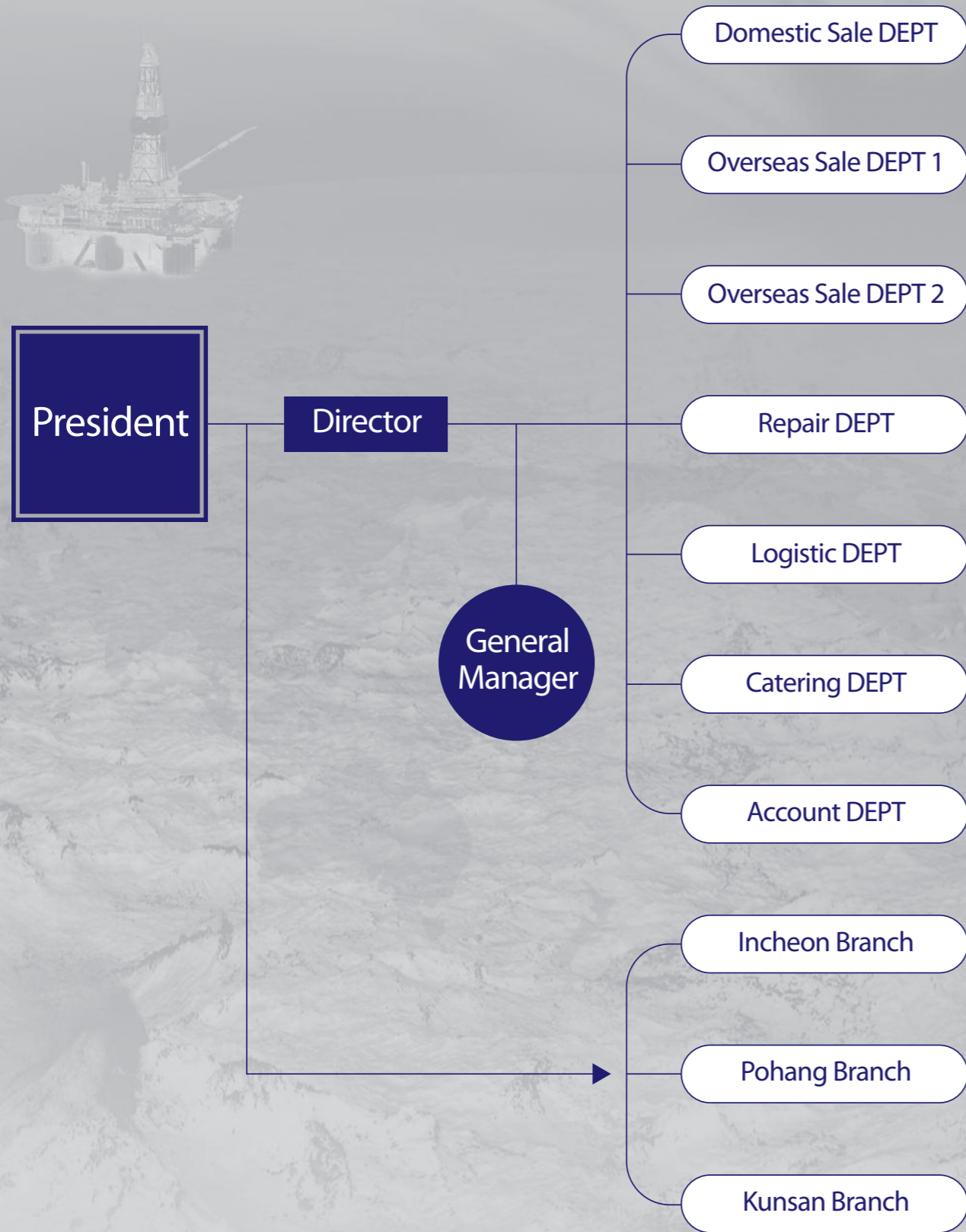
- Establishment: May, 1990
- Representative: Jong Soo, Jeong
- Bank Reference
- The Korea Exchange Banck, Dongkwang-Dong
- The Firsh Bank, Bujeon-Dong
- The Kookmin Bank, Sooan-Dong

History

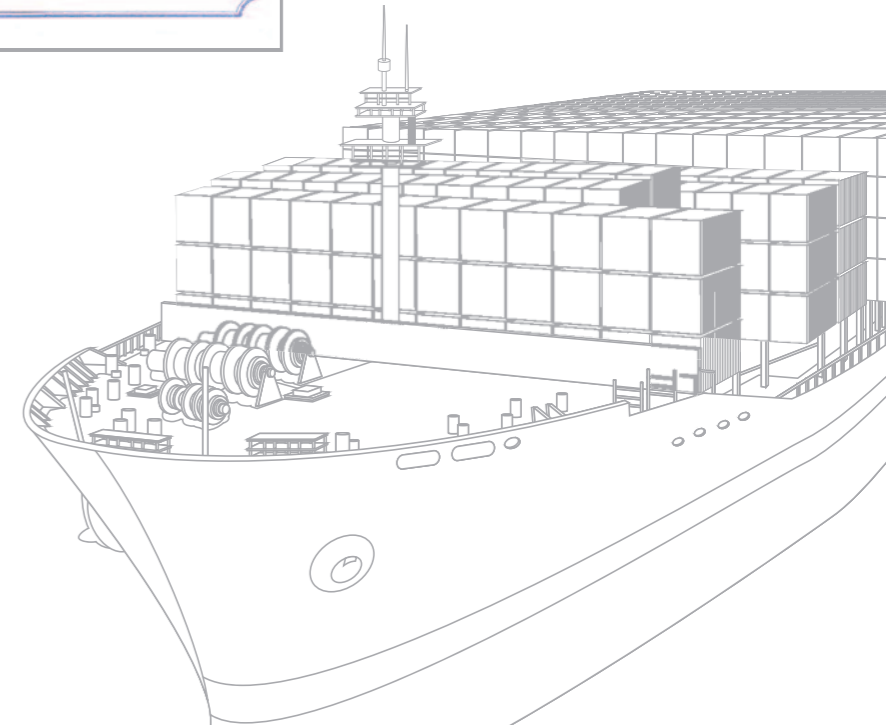
- 1990
 - 05 Established Company [Busan&Seoul].
 - 07 Established Masan Branch.
 - 08 Established Ulsan Branch.
 - Established Pohang Branch.
 - 09 Established Kwang yang Branch.
- 1991
 - 03 Registered member of ISSA.
 - 04 Established Daesan Branch.
- 1992
 - 02 Established Donghae Branch.
 - Established Pyungtaek Branch.
- 1993
 - 04 Contracted as a sales agent with DSR wire corp.
 - 06 Contracted as a sales agent with DAERYANG ELECTRIC CO.,LTD
- 1995
 - 01 Registered to Korea Shipping Agencies Association.
 - 03 Contracted as a sales agent with WOJIN FIRE CORP.
 - 04 Contracted as a sales agent with KBC BEARING.
- 1996
 - 01 Contracted as a sales agent with DOOJIN FIRE HOSE COM.
 - Contracted as a sales agent with SHELL.
 - 02 Contracted as a sales agent with DONGYANG ROPE CO.,LTD
- 1997
 - 06 Contracted as a sales agent with KISWIRE CO.,LTD
 - 10 Built New Head Office and Warehouse .
- 1998
 - 07 Contracted as a sales agent with WILDEN PUMP.
- 2000
 - 07 Certified by ISO 9002[DNV].
- 2003
 - 05 Registered a member of SHIPSERV.
 - 06 Certified by ISO 9001 [DNV].
- 2004
 - 01 Registered a member of IMPA.
- 2010
 - 01 Contracted as Representative in Korea of EMS Ship Supply [Eitzen Group].
- 2012
 - 08 Certified by ISO 9001 [EC].
- 2013
 - 08 Certified by ISO 14001 [EC].



Organization



Quality & Environment



Why KOMASCO?

Why you should choose KOMASCO..... As Leading ship supplier in Korea.

A Stability

We have been in this field over 20years with good reputation and have over 200 customers in the world.
30 personnel of very experienced our staffs will provide the best service with you & your vessels.
All of our customers have been enjoying our service for a long time
Also we scored BB+ grade credit from famous credit-rating agency in korea.

B Quotation

We established B-TO-B system with our suppliers in local market to source items with best price & best quality for the first time in korea.
The system make suppliers in local market to compete with the lower price & high quality products.
This able us to prepare our quotation accurately, speedy with the best price & high quality products.

C Delivery status

Once you place the order to us, you can check the status of your good order visiting our web after log-in at 'ORDER STATUS'
Wherever you would be in the world, Visting our web-site enable you to check how your good order is proceeding
It would ensure you safe receipt of the order & delivery on time.

D Feedback

During our delivery, We present supplier questionnaire to the vessel then the vessel can evaluate our service & products.
All questionarie will have vessel's evaluation, we enclose it to the invoice for your consideration.
It makes all parties to know the result of the delivery and keep us to maintain good service.

E Worldwide Net-work

As a member of EMS Ship Supply [Korea Representative of EMS Ship Supply]
We have world-wide network, so we can provide our service & necessary action at any where in the world.

F Logistic Service

We operate our own forwarder. So we can provide logistic service with you for your good spare parts.
We handle ship's spare parts from overseas for the delivery to the vessel in Korea.
Also we can send your good orders and off landed items to overseas with the most economical way.

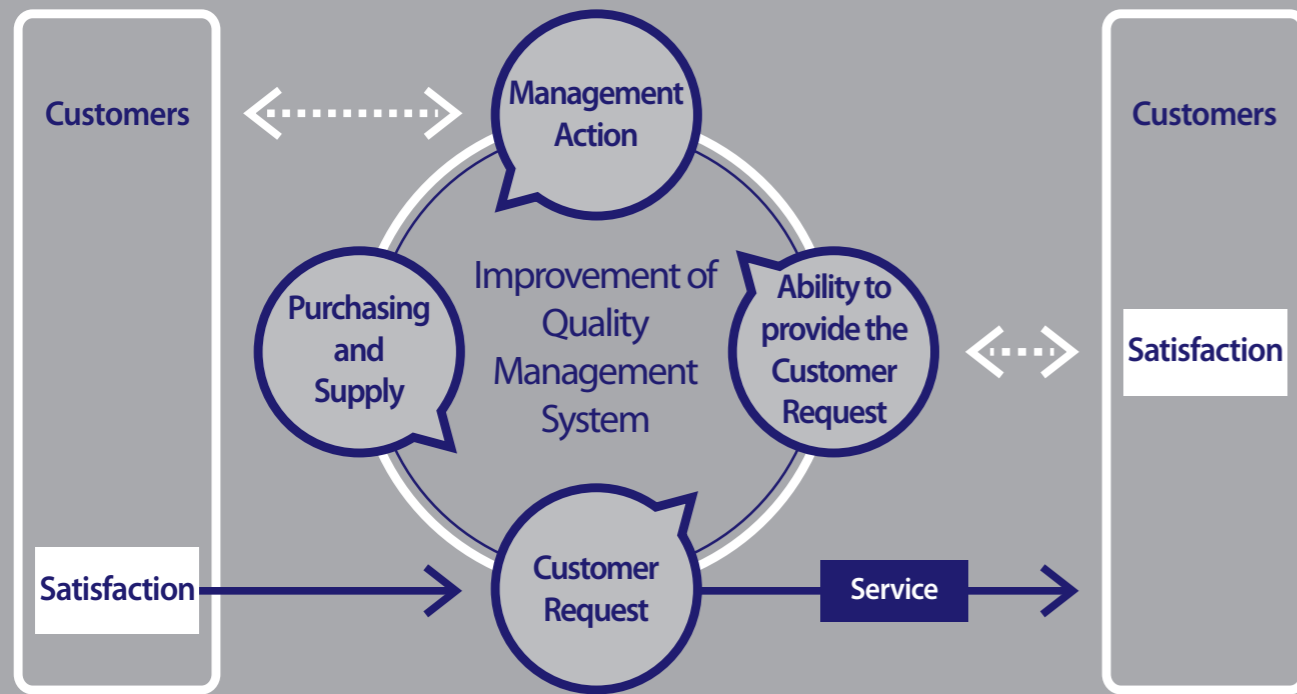
Why KOMASCO?

	KOMASCO	OTHER SUPPLIERS
STABLITY OF FINANCES	○	△
B TO B SYSTEM	○	X
ORDER STATUS SYSTEM	○	X
SUPPLIER QUESTIONNAIRE	○	X
FEEDBACK	○	X
WORLDWIDE NETWORK	○	X
LOGISTICS(our own forwarder)	○	X
QUALITY SYSTEM (ISSA QUALITY / ISO 9001)	○	△
ENVIRONMENT SYSTEM (ISO 14001)	○	△

The collage features several key documents from KOMASCO:

- COMMERCIAL INVOICE:** Lists items such as O-RING FUEL P/P DRAWING NO. DCS 771800-720.3 PART NO. M8060AS11 and PILOT BURNER DRAWING NO. AP-5-60 PART NO. AP-5-60. It includes a table with columns for 'Description of goods', 'Quantity', 'Unit', and 'Price'.
- Certificate of Quality:** A blue-bordered document certifying the innovative capability of the company as a role in Busan's economic development. It includes the company name 'KOREA MARINE SUPPLY CO.,LTD' and representative 'Jeong Jong-soon'.
- Supplier Questionnaire:** A form titled 'QUESTIONNAIRE' for 'KOREA MARINE SUPPLY CO.,LTD'. It contains fields for 'VESSEL'S NAME' (CLIPPER VALOUR), 'NAME OF SUPPLIER' (KOMASCO), 'PLACE OF DELIVERY' (INCHON, KOREA), and 'DATE OF SUPPLY' (19 JULY 2013).
- ISO 9001 Certification:** A logo for 'BS EN ISO 9001:2008' issued by 'Independent European Certification Ltd' to 'Korea Marine Supply Co., Ltd.' on 01/01/2013.

Business Outline



Business List

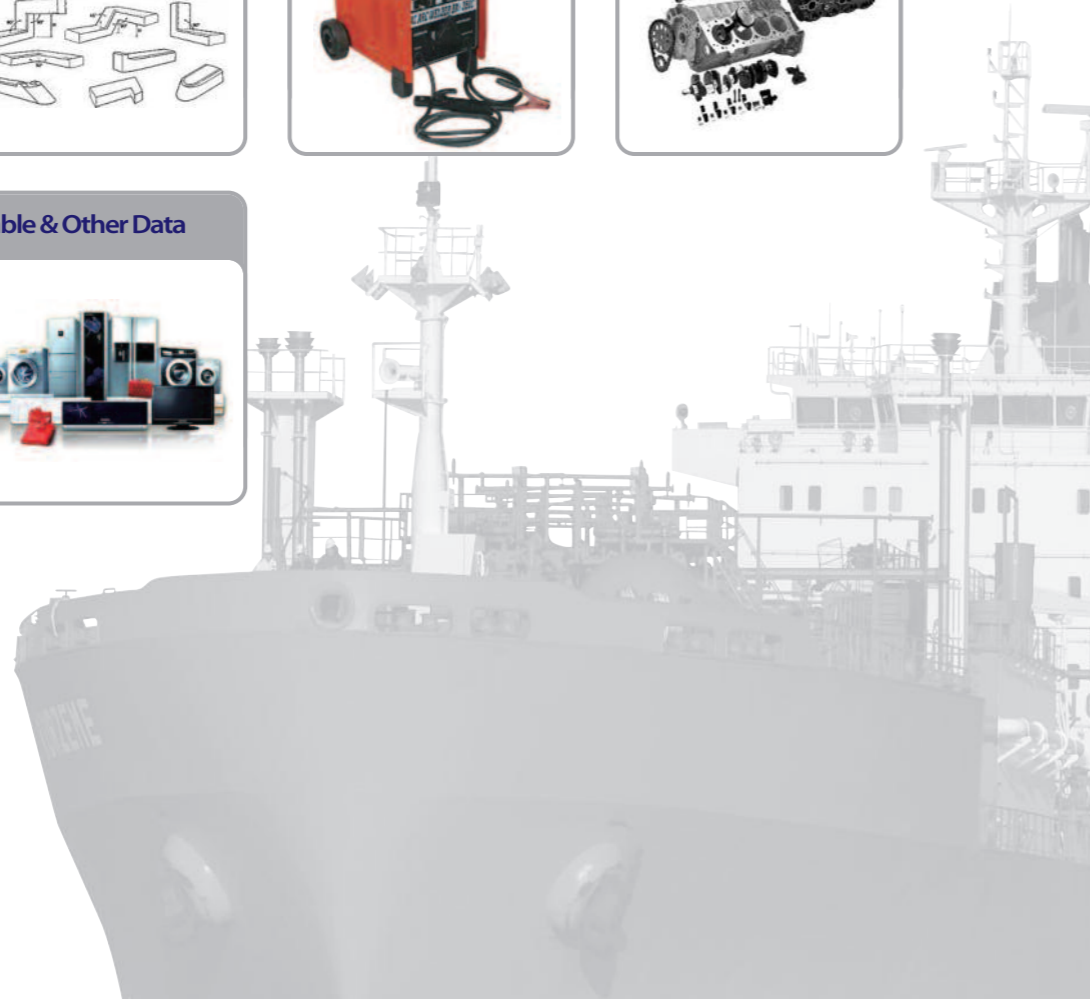
- General Marine Store & Equipment Supply
- Provision & Bonded Store Supply
- Marine Spare Part Supply
- Repairing & Inspection
- Logistics
- New Building Initial Stores
- Offshore Technical Stores / Catering
- Agency Services

General Store Supply



General Store Supply

Cutting Tools 	Measuring Tools 	Metal Sheets, Bars, etc. 	Screws & Nuts
Pipes & Tubes 	Pipe & Tube Fittings 	Valves & Cocks 	Bearings
Electrical Equipment 	Packing & Jointing 	Welding Equipment 	Machinery Equipment
Welfare Items 	Table & Other Data 		



Provision & Bonded Store Supply

Provisions

- Tinned Vegetables
- Dried Fruits / Nuts
- Tinned Fruits
- Rice / Pasta
- Cereals / Flours / Breads
- Dairy Products / Oils & Fats
- Sauces / Pickles / Soups
- Spices
- Bakery Products / Jams
- Juices / Tea / Coffee
- Vegetables, Fresh
- Fruit, Fresh
- Frozen Meat, Poultry Processed Meats
- Frozen Fish, Seafood, Tinned Fish
- Vegetables, Frozen
- Dried Vegetables

Bonded stores

- Vodka
- Cognac
- Whisky
- Tequila
- Rum
- Gin
- Wine
- Vermouth
- Sparkling Wine & Champagne
- Beer
- Korean Beer & Soju
- Cigarettes
- Soft Drink

Slop Chests

- Snack
- Chocolate
- Popcorn
- Nuts
- Sanitary

Marine Spare Part Supply

◎ Main Engine Spare Parts

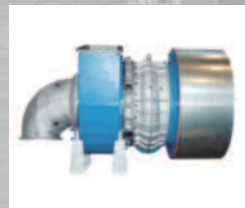
• STX Engine A/S & Part sales



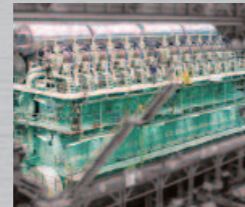
- STX-Man B&W: 2-Stroke
- STX-Man B&W: 4-Stroke
- STX-Pielstick
- STX-Niigata
- STX-Cummins



- Technical Service
- Radial Flow Turbocharger
- Axial Flow Turbocharger



• Doosan Engine A/S & Part sales



- DOOSAN-Man B&W: 2-Stroke
- DOOSAN-Man B&W: 4-Stroke
- DOOSAN-W.Nsd Sulzer: 2-Stroke
- Measutal
- Retrofit Service



• Hyundai Engine A/S & Part sales



- Hyundai-Man B&W: 2-Stroke
- Hyundai-Man B&W: 4-Stroke
- HiSEM Engine
- Propeller

◎ Machinery Part



Samgong Co.,Ltd.

- Ship's Side Scuttles & Windows
- Accommodation Ladders And Winch
- Wharf Ladder
- Oil Purifier



Hanyoung Engineering Co.,Ltd.

- Oily Water Separator Sewage Treatment Plant
- 15ppm Bilge Alarm
- Bilge Pump & Sludge Pump



Kosco Co.,Ltd.

- Bwms (Ballast Water Management System)

◎ Korea Marine Machinery Part



Repairing & Inspection

Engine Services

- We Provide Complete Services for Engines and Related Systems, For Man B&W, Sulzer and Other Makers of Engine.
- Overhaul of Engine, Piston, Liner, Cylinder Cover, Fuel Injection Pump and Nozzle Etc.
- Reconditioning of Cylinder Covers, Piston Crowns and Rods, Exhaust Valves & Seats, Relief Valves.

Electrical & Automation Services

- We Can Cover Your Entire Work Scope Including Electrical and Pneumatic Equipment, Automation, Repair, Maintenance, Troubleshooting and Upgrades.
- Repair & Maintenance of Items As Follow; Motor, Generator, A.V.R, Navigation & Gmdss Equipment, Crane & Winch Control, Auto Control System, Pneumatic System. All Kind of Electrical Trouble Shooting.

Structural Welding

- Our Experienced Welding Specialists Are The Leading Force In Carrying Out The Structural Repair In The Marine Industry. All Structural Welding Repairs Are Carried Out In Accordance With Classification Societies And In Closer Cooperation With Manufacturer Specific Procedures. All Our Welding Personnel Are Certified By The Leading Shipping Business Classification Societies.
- Bedplate, Gear Column, Frame, Air Receiver Crack Repair
- Engine Room and Deck Piping System Renewal or Modification
- Hatch Cover and Water Tight Door Crack Repair
- Ballast Tank, Tank Top and Hull Steel Plate Repair Etc.

Underwater Repairs

- We offer a full range of underwater repairs and inspection Underwater Cleaning, CCTV Inspection, Propeller Polishing and Other Underwater Works.

Safety Equipments

- Life Raft, Life Boat and Fire Fighting System Etc.

Calibration Service Listed Items

- Portable Gas Detectors
- Fixed Gas Detection System
- Breathalyser
- Self-Contained Breathing Apparatus
- Escape Emergency Breathing Devices
- Chemical Protection Suits
- Temperature Measuring Instruments
- Pressure Measuring Instruments



Logistics



Air Freight Service

- Powerful Ability to Handle Special Shipment
- Quick&Punctual Air Service
- Competitive Consolidation Know-How and Rate
- Know-How from The Long Experience in Handling The Largest Air Freight Volume in Korea



Sea Freight Service

- Total Logistics SVC connecting with inland Transportation [In land trucking, Rail, Barge, Feeder service etc.]
- Inland Cy and Port CFS Service
- TSR [Trans Siberian Rail] / TCR [Trans China Rail] Service



Project Cargo Service

- Total Logistics: Project Logistic Planning / Consulting / Insurance / Handling Bulk, Container, Air Cargo / Custom Clearance / Inland Transportation
- Experience of Handling Project Cargo
- Special care for Cargo safety [Technical Study]
- Dispatching the Experts of Delivery Service of Project Cargo and Proposing Proper Way of Delivery



Courier Service

- Providing the Best Routing and Rate in Conjunction with The prominent Courier Worldwide
- One Stop Service
- Logistics Cost Saving Activities for Customers
- Multi Pick Up Service When The Location of Customer and Cargo Is Different



Local Logistics

- Quick Total Logistics Service Related to Internation Transportation
- Warehouse Management System & E-Tracking System
- Have Our Base At Main Local Areas for Storage / Transportation [Inchon, Gimpo, Ansan, Pyoungtek, Gumi, Busan act.]

Agency Services



Recruiting and Manpower Services

- Engineering Personnel
- Construction Personnel
- Commissioning Personnel
- Expatriation Manpower Supply



In Country Support Services

- Accommodation
- Vehicles
- Procurement
- Emergency

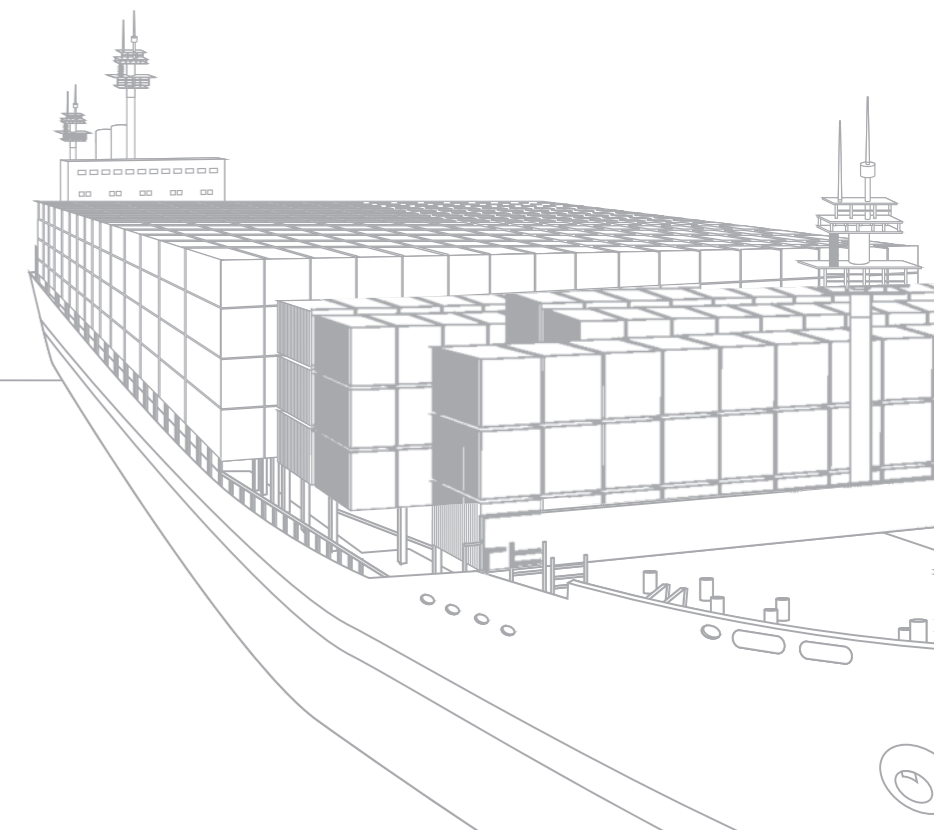
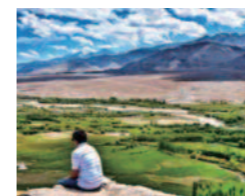


Relocation Services

- Travel
- Immigration and Visa
- Legal
- Individual Class 'B' Income Tax
- Alien Registration



Shipping Agency



EMS Ship Supply



EMS Ship Supply provide marine and offshore supplies, marine equipment, spare parts and services. We supply to ships of every kind and to the offshore industry. EMS Ship Supply is a division of EMS Seven Seas ASA (EMS), listed on the Oslo Stock Exchange.

A partner worldwide

We have experienced considerable growth over the last couple of years, mainly through acquisitions. We are capable to serve you as a customer through our extended worldwide network covering the North- and South America, Europe, Africa, Middle East and Asia.

The acquisition of Spanish Provimar in 2007 provided EMS with a strong position in the Mediterranean and on the Iberian Peninsula. All previous Provimar operations in Spain, Portugal, Gibraltar, Morocco, Croatia, Uruguay, Argentina and the USA are now being operated under the EMS Ship Supply brand.

The 2008 acquisition of Seven Seas Shipchangers, with headquarters and warehouse facilities in Dubai and operations throughout the Middle east, gave EMS Ship Supply a leading position also in this region, which is one of the world's most dynamic and fastest growing.

Global service offering:

Today's EMS Ship Supply has a global service offering, where the customer benefit from economies of scale, purchasing advantages and efficient logistics-combined with local expertise and service.

Worldwide availability

Our worldwide presence ensures precise delivery of all the supplies and spare parts you need wherever and whenever. EMS Ship Supply always offers products from leading manufacturers to achieve your satisfaction.

We have operations in more than 200 ports worldwide:

North- and Centre Europe (Rotterdam, Hamburg), South Europe and North Africa (Algeciras, Angola, Barcelona, Gibraltar, Las Palmas, Lisbon), North- and South America (San Lorenzo, Houston, Mobile), Middle East (Bahrain, Djibouti, Dubai, Fujairah, Qatar, Salalah), and Asia (Singapore), Scandinavia (Oslo) and many more.

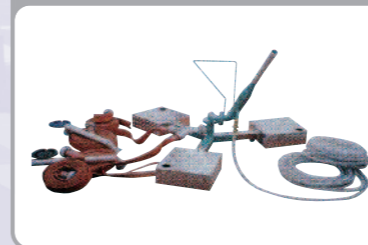
At EMS Ship Supply, we are constantly aware of our clients' greatest concern – to save time and make money.

That is why we can count on a swift response on all your inquiries and purchase orders.

We aim to deliver your requirements fast and efficiently.

EMS Marine Equipment [Stromme Products]

Cargo Hold Cleaning Equipment



Cargo Hold Cleaning Chemicals



High Pressure Cleaning



Diaphragm Pumps



Air Compressors



Air Dryers



Air Filters



Breathing Air Compressors



Fire, Rescue and Safety Equipment



Oily Water Separators



Oil Pollution Equipment



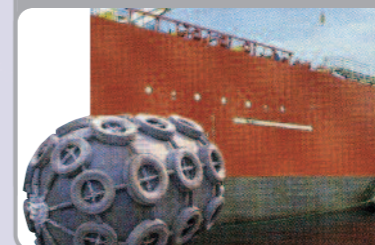
Tank Ventilation Fans



Tank Ventilation Fans



Pneumatic Fenders



Immersion Suits

